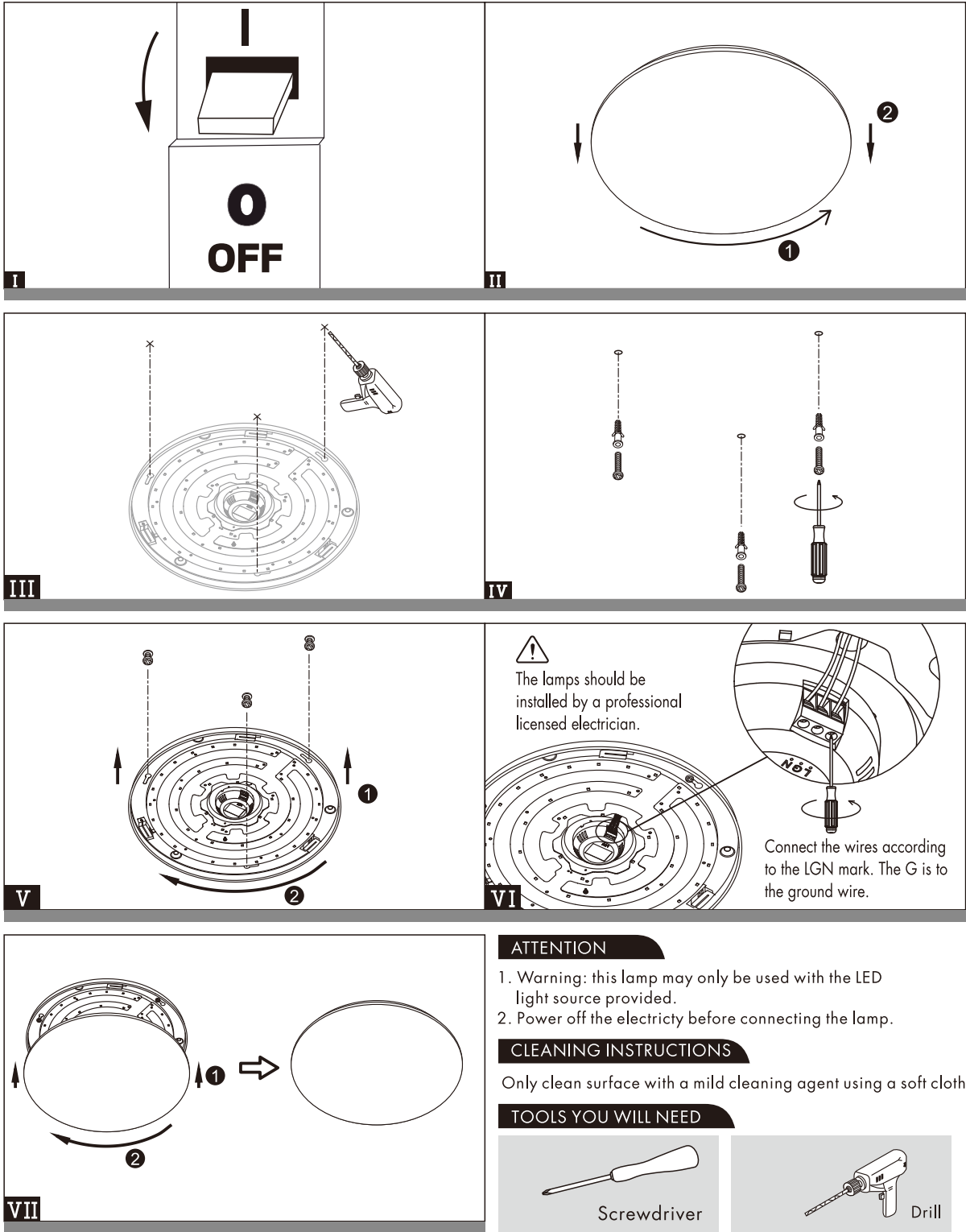


INSTRUCTION MANUAL

Extrema CL 60 White
96798

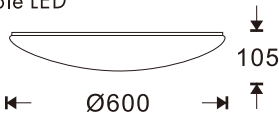


180-240V RF dimmable Max.90W



98798
This item contains unchangeable LED

| | |
|-----------|----|
| 6600 | LM |
| 90 | W |
| 2700-6500 | K |
| >80 | Ro |
| 30000 | H |



QAZQA

WWW.QAZQA.COM

正面

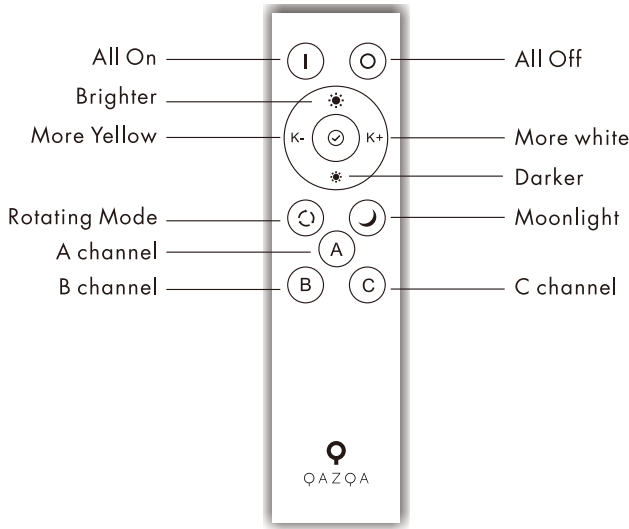
96796-96797-96798-96799-98386

ADJUSTABLE LED CIRCULAR LUMINAIRE

REMOTE CONTROL INSTRUCTIONS



1. Install 2 x AAA batteries (Not supplied) into the remote control.
2. On & Off buttons turn the fitting on and Off.
3. K- & K+ buttons allow you to adjust the colour temperature to your liking.
4. The * & * buttons adjust the level of brightness (dimming function).
5. The ☺ button changes the colour temperature from warm to cool to a mix of both.
6. The ☹ button puts the light fitting into "Nightlight" mode.
7. Channel "B" & "C" buttons can be used for controlling additional LED circular light fittings and each channel and light fitting would have to be "paired" as below.



Note: The Light Fitting & the Remote Control have been paired "A channel" at the factory. If the remote control is not working you may need to action the following pairing process.

1. With the light fitting switched Off, long press Channel "A" on the remote control and wait for the LED on the remote control to remain a constant RED.
2. With the Channel "A" button still pressed down switch on the light fitting. It should initially blink which indicates that the light fitting has been successfully paired.

Specification

| | |
|---------------------|-----------------------------|
| Mode | CS-RG12KW1 |
| Color | White |
| Wireless Technology | 5.8G wireless communication |
| Control distance | 30m |
| Moonlight Mode | Yes |
| Group Control Yes | Yes |
| Rotating Mode Yes | Yes |
| Power | A pair of AAA batteries |
| Size | 150*38.5*12mm |
| Weight | 35g |

QAZQA

WWW.QAZQA.COM

反面