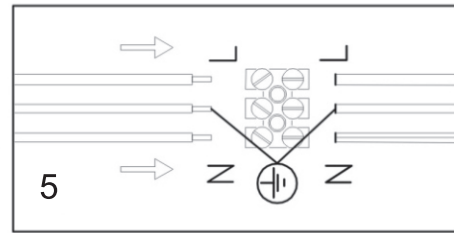
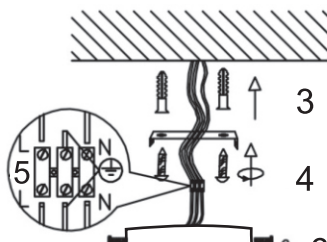
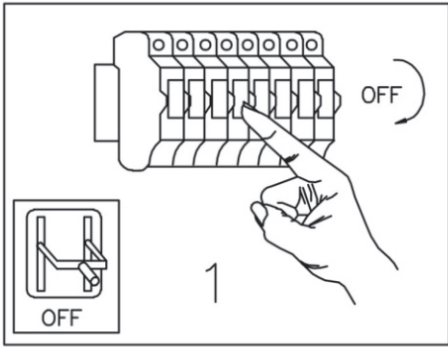


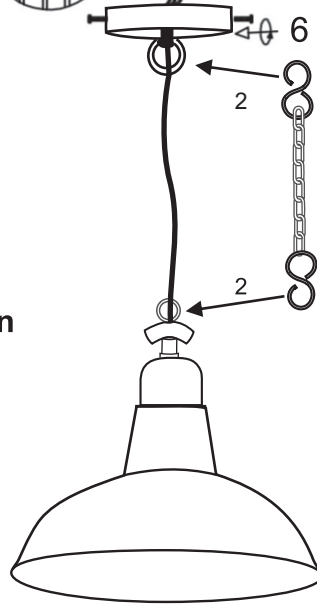
# INSTRUCTION MANUAL



**94854**  
Goliath HL Medium Copper

**94855**  
Goliath HL Medium Olive Green

**94856**  
Goliath HL Medium Brass



1. Switch off the main power supply.
2. Insert and close the ends of the chain to the ceiling rose and the lamp shade as shown in the picture on the left.
3. and 4. Use screws to mount the bracket on the ceiling.
5. Connect the electrical cable of the lamp with the mains wire.
6. Screw the side screws provided with the ceiling rose to mount the ceiling rose on the bracket.
7. Use an E 27 threaded bulb on the lamp holder to light the lamp.

