



smartwares®



STAINLESS  
STEEL



PIR SENSOR  
110°x 8M



## solar wall light with motion detector

NL Solar wandlamp met bewegingsmelder DE Solar-Wandleuchte mit Bewegungsmelder FR Lampe murale solaire avec détecteur de mouvement ES Luz solar de pared con sensor de movimiento IT Lampada solare da parete con sensore di movimento PT Luz de parede solar com detetor de movimento SE Vägglampa med solcell och rörelsedetektor TR Hareket dedektörlü solar duvar lambası PL Kinkiet solarowy z czujnikiem ruchu

smartwares® safety & lighting BV. Jules Verneweg 87 5015 BH Tilburg The Netherlands SERVICE.SMARTWARES.EU	NL : 0900-2088888 Lokaal tarief
	BE : 070-233031 (NL) Lokaal tarief : 0800-97570 (FR) Gratuit
	FR : 0825 560 650 15ct/min
	DE : +49 (0) 1805 010762 14Ct./Min. dt. Festnetz, Mobil max. 42Ct./Min
	UK : +44 (0) 345 230 1231 ES : +34 938427589

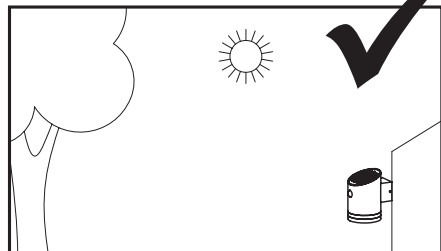
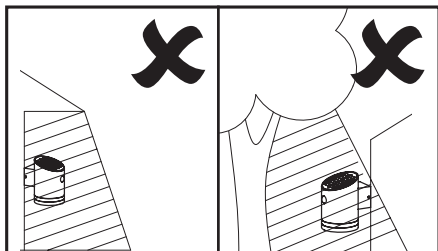
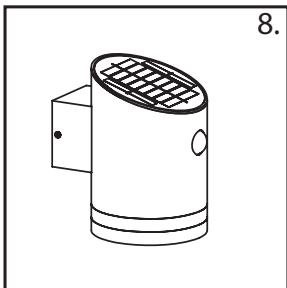
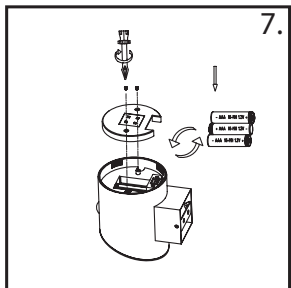
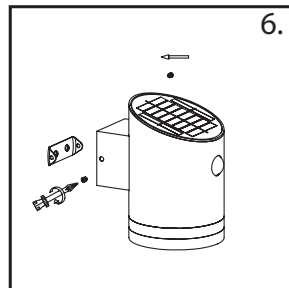
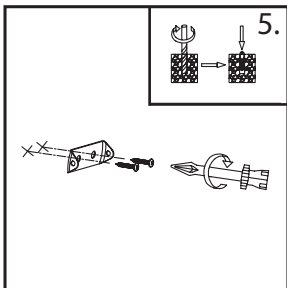
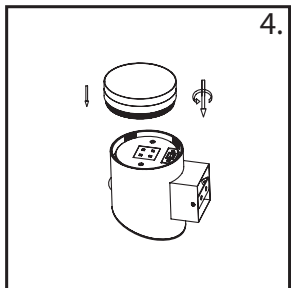
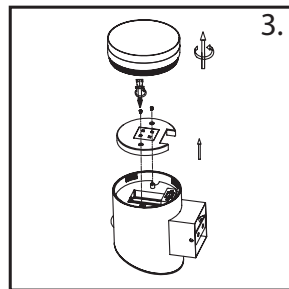
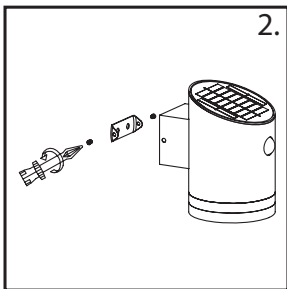
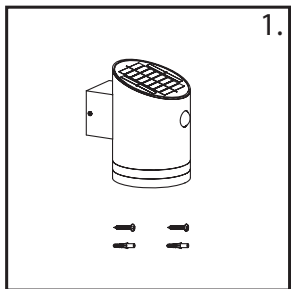
CUSTOMER SERVICE



IP44



5000.701 / 10.045.82



INTEGRATED  
LED



OUTDOOR  
USE



3x1.2V AAA  
900mAh  
NI-MH



IP44



3000K  
WARM WHITE



ON / OFF  
SWITCH



CHARGING  
TIME 5 - 6H



NIGHT 25  
LUMEN



MOTION 100  
LUMEN  
±300 x 40 sec



PIR SENSOR  
110° x 8M  
(not adjustable)

IP44

- (GB) The fixture is splash-proof.
- (NL) Het armatuur is spatwaterdicht.
- (F) L'armature est étanche aux projections d'eau.
- (D) Die Armatur ist spritzwasserdicht.
- (N) Armaturet er beskyttet mot sprut.
- (S) Armaturen är tät mot stänkvatten.
- (DK) Armaturet er stænktaet.
- (FIN) Valaisin on roiskevedenpitävä.
- (PL) Urządzenie jest bryzgoszczelne.
- (RUS) Осветительная арматура является брызгозащитной.
- (BG) Осветителното тяло е устойчиво на намокряне.
- (H) A szerelvény fröccsenésálló.
- (RO) Corpul de iluminat este rezistent la stropire.
- (SK) Zariadenie je chránené proti postriekaniu.
- (HR) Svjetiljka je zaštićena protiv štrcanja vode.
- (CZ) Zařízení je chráněno proti postřiku.
- (SLO) Nosilec je odporen proti curkom.
- (I) La lampada è protetta contro gli spruzzi d'acqua.
- (P) A ferragem de conexão é a prova de salpicos.
- (E) El montaje está protegido contra salpicaduras.
- (GR) Η εφαρμογή είναι αδιάβροχη στα πιτσιλίσματα.
- (TR) Tertibat sýçramalara karbý dayanýklýdýr.