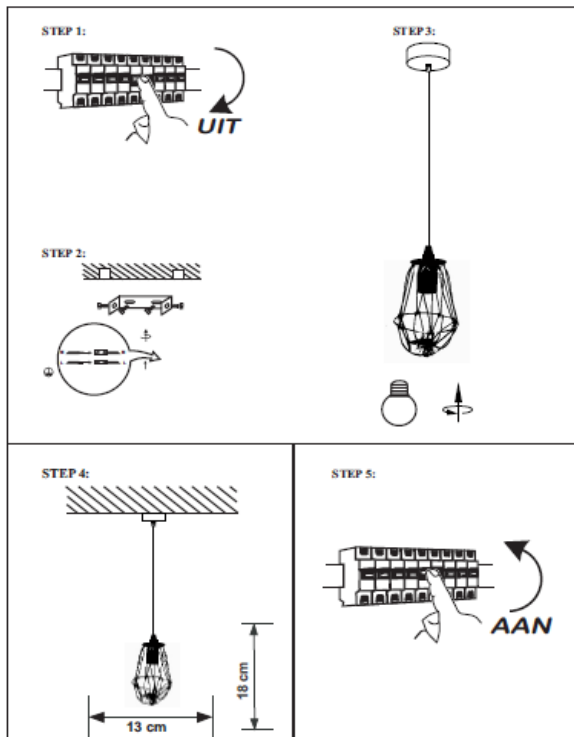


# INSTRUCTION MANUAL

Pacific HL Old Brass  
92991



## SAFETY DIRECTIONS

Please study the instruction manual and below information carefully before installing or using this product. Please keep this user manual for further reference

- The luminaires may only be installed by authorized and qualified technicians according the valid regulations for electrical installation.
- Maintenance of the luminaires is limited to their surfaces. During maintenance no moisture can come into contact with any areas of the terminal connections or voltage control parts.
- The electrical supply must be switched off at the outset, preferably by means of a switch in the distribution box, before any installation, maintenance or repair work is undertaken.
- Exterior lighting must not be installed during rain.
- Take account of the minimal separation distance from other objects and the room required around the fitting.
- If in any doubt, consult a professional, taking local installation requirements into account. Some countries stipulate that lighting may be installed only by registered installers.
- Clamping screws in electrical connections must be adequately tightened. This is particularly the case with 12V low voltage conductors.
- When replacing a halogen lamp, wait for it to cool, for a minimum of 5 minutes.
- Clean with a clean, dry cloth or brush, use no solvents or abrasives. Avoid dampness on all electrical components
- Take account of all available technical information.
- Take note of the symbols when connecting wires:  
N =Neutral  
L =Live  
⊕ =Earth

### 13. Meaning of symbols:

- For indoor use only, where direct contact with water is impossible
- Protection class 1: the fitting must be earthed
- Protection class 2: the fitting is double insulated and does not require earthing
- Protection class 3: the fitting is low voltage
- Observe the indicated minimum distance between the lam and the illuminated materials/objects
- Only the self-screening halogen illuminants should be used with the luminaire
- Strip the wire to the indicated length
- Connect using the specified cable
- The armature can be used in combination with a dimmer. Consult the sales outlet for the correct type of dimmer(important in the case of 12V fittings)
- Suitable for installing on normal inflammable materials
- The maximum wattage indicated in each lighting unit, for example, must not be exceed
- This luminaire cannot be disposed together with normal domestic waste in standard rubbish bin, but you have to bring it to a staging area for electrical waste
- This luminaire was designed to work only with the indicated voltage

QAZQA

WWW.QAZQA.COM

QAZQA

WWW.QAZQA.COM