

INSTRUCTION MANUAL

Strain WL Dark Grey
92302

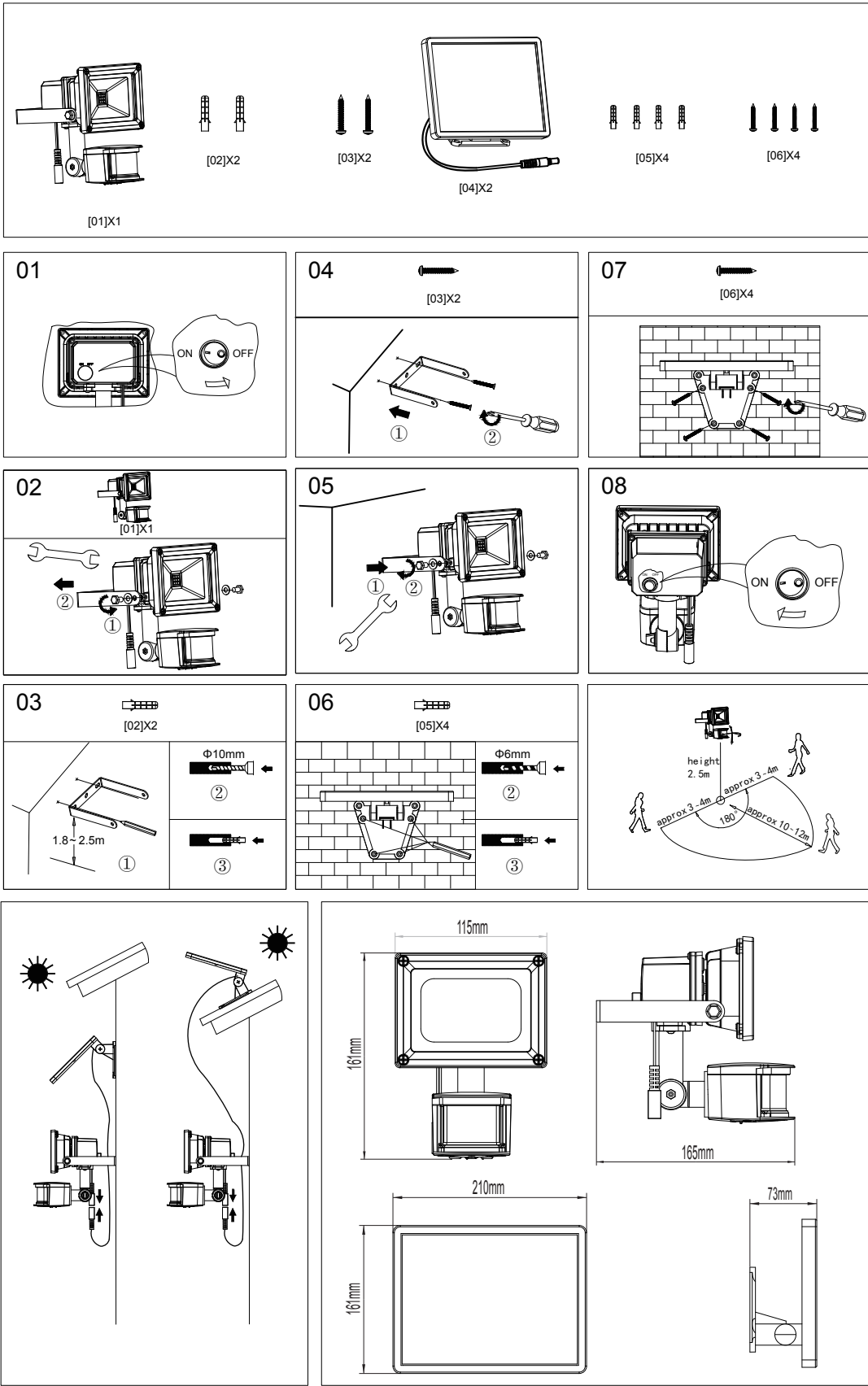
Unchangeable LED
Max. 9x1W LED
3000K±300K
10000H

7.4V
1800mAh
LI-ION
Rechargeable
battery

IP44

CE

GUARANTEE
2 YEARS



INSTRUCTION MANUAL

Strain WL Dark Grey
92302

■ HOW TO DETERMINE WHERE TO MOUNT YOUR SOLAR PIR SENSOR LIGHT
Please be noted that: DIRECT SUNLIGHT is important for the operation of SOLAR PIR SENSOR LIGHT. The more direct sunlight the solar cell receives in daytime, the longer the light will operate.

■ Main Unit:
The main unit contains the lamp (9pcs 1W LED), motion sensor and battery (7.4V 1800mAh LI-ION Rechargeable battery). When determining where to mount this unit, please consider that the motion sensor with detection scope of max. 12meters (in front of the light) and about 180° (horizontal) at 25℃ environmental temperature. The detection range of the unit may alter with temperature change, the mounting height and location. All Passive Infra-Red detectors are more sensitive in cold and dry weather than warm and humid weather.

■ Solar Cell:
The solar cell is one of the main power source for the SOLAR PIR SNESOR LIGHT. It converts the sunlight's energy into electricity that charges the battery in main unit. It requires DIRECT SUNLIGHT onto the surface of solar cell for as long as possible during the daytime.

Use the three screws provided in the package to mount the solar cell unit onto a solid surface. Make sure it is fixed into the solid surface.

You can adjust the angle of the solar cell. It should face as much DIRECT SUNLIGHT as possible during the daytime.

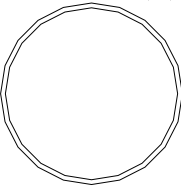
At last route the solar cell's power cord to the main unit and plug it into the side hole for solar cell.

- Mounting the Main Unit:
1. Unscrew the screws on the Mounting support with a Wrench.
 2. Use the Support to mark the position of screw holes onto mounting surface. Drill the wall to depth of about 6 cm and fit the plastic plugs, and then fix the Support to the mounting surface with rightly screws. Care should be taken to avoid drilling or screwing into concealed electrical wiring.
 3. Mounting the Main unit onto the Support.

■ FINAL ADJUSTMENT AND START-UP
After you successfully installed your SOLAR PIR SENSOR LIGHT, you are almost ready for carefree operation with a few final steps:
Initial 2-days Charge:
On the main unit there is a switch with 2 positions:

- OFF ● ON
ON —
Position for normal operation
OFF —
1) Position for delivery or long periods of non-use
2) Position for initial 2-day charge before first adjustment and use.

ON OFF

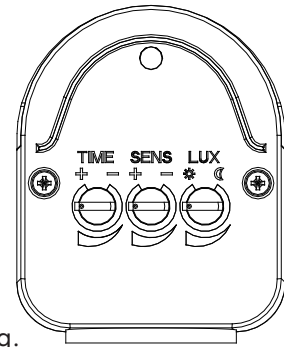


Then, turn the switch to OFF position. The solar cell will charge the battery without activating the unit. Leave the switch in this position for 2 sunny days to ensure that the battery has a full charge for motion sensor adjustment and normal operation.



INSTRUCTION MANUAL

Strain WL Dark Grey
92302



■ HOW TO ADJUST THE MOTION SENSOR

After the initial 2-day charge, turn the switch to AUTO position.

On the motion sensor there are two adjusting knobs: TIME /SENS/ LUX

1) TIME – Duration time: For how long you wish the light to run after motion is detected in the field, the duration time is from 10 seconds to 60 seconds adjustable. Note: Once the light is activated by the PIR sensor, any subsequent detection will restart the timed period again from the beginning.

2) SENS -The sensitivity means the Maximum distance which PIR Sensor can be triggered by movement body. Turning the SENS knob from (+) to (-) will decrease the sensitivity.

3) LUX – Lux control level: The Lux control module has a built-in sensing device (photocell) that detects daylight and darkness. (☀) position denotes that the loading will be turned on by PIR during day and night, (☾) position denotes that the loading will be turned on by PIR only at night. You can set desired level to run the unit the by adjusting the LUX knob.

Note: If, in daily position, the unit turns on when it is too light outside, turn the control towards (☀). However, if the light is not activating during nighttime because of a street light or bright house light, turn this control towards (☾).

Walking-test:

Point the motion sensor to face the area you want to detect motion in and set the TIME knob to minimum (-) position and LUX knob to “light” (☀) position. Walking slowly in its detection area, the sensor can detects moving invisible infra-red radiation given off by a human body and then turn on the light. Test the coverage of the area by walking slowly around until not to switch on the light.

ADJUSTMENT OF THE LAMP HOUSING:

Point the lamp housing to face the area you wish to illuminate.

■ GENERAL ELECTRICAL AND SAFETY WARNINGS

- 1) Do not cut the solar cell wire. Discontinue use if the wire becomes frayed or broken.
- 2) Do not immerse components in liquid.
- 3) Do not use any other charge than the single solar charging panel provided with the SOLAR PIR SENSOR LIGHT. This may result in injury or damage to the light and voids any warranty.
- 4) Position so that the cord is securely fastened and will not result in a hazard (such as tripping).
- 5) When changing the battery, be careful of any sharp edges that could cut you or the wires. Do not pull on wires.

■ CLEANING

It is important that the solar panel is kept free of dirt and debris. A dirty solar panel will not allow the battery to fully charge and this will shorten the life of battery and cause the light to malfunction

■ STORAGE

If you wish to store your light indoors for more than two or three days, follow these steps to prevent damage to battery:

1. Turn the switch to OFF position
2. Store the light and solar panel where it can receive some sunlight or room light each day. The battery needs light to maintain a charge during storage
3. During prolonged storage, unit must be fully charge once every four months, for best performance, do not store for prolonged periods.



INSTRUCTION MANUAL

Strain WL Dark Grey
92302

■ NOTE THE FOLLOWING TROUBLE-SHOOTING:

1. Symptom: Light won't activate in normal operation.
Correction: make sure that:
 - The main unit switch is the ON position.
 - The Lux control is not set too far toward (☾)
 - The motion sensor is positioned to face oncoming movement
 - The solar cell is angled so that it gets plenty of direct sunlight for most of day, if not the entire day.
 - Battery charge is not too low (charge for 2 sunny days—switch turned to OFF)
2. Symptom: Light turns on during the day.
Correction: Make sure that
 - The Lux control is not set too far toward (☀)
3. Symptom: Light quickly flashes on and off
Correction:
 - Move the Lux control toward (☀)
 - Low battery (charge for 2 sunny days—switch turned to OFF).
4. Symptom: Light is not as bright as normal.
Correction:
 - Low battery (charge for 2 sunny days—switch turned to OFF).



When your light fitting comes to the end of it's life or you choose to update or upgrade it by replacing it. Please do not dispose of it with your normal household waste. Please recycle where facilities exist. When you need to dispose of this fitting, check with your retailer or local authority for suitable options. New regulations will encourage the recycling of Waste from Electrical and Electronic Equipment (European “WEEE Directive” effective August 2005).

