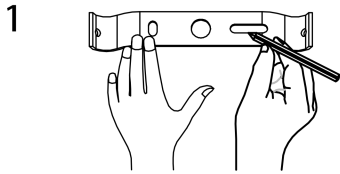


INSTRUCTION MANUAL

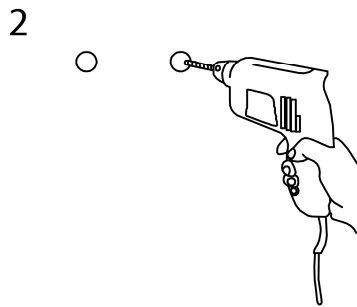
Dents HL 40 Copper

91128

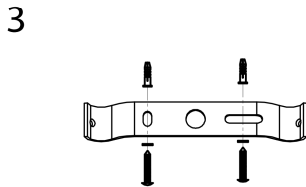
- 1、Put the plate to the wall and use the pencil to mark the holes.



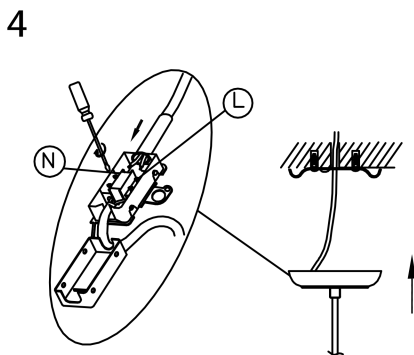
- 2、Drill the holes on the wall.



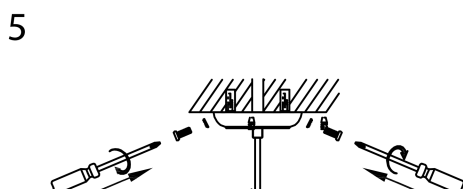
- 3、Fix the plate to the wall by screw.



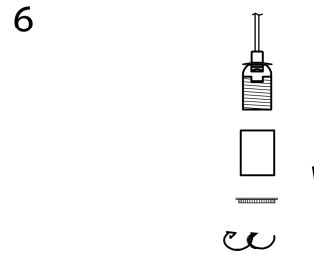
- 4、Connect the fixture by positive and negative poles.



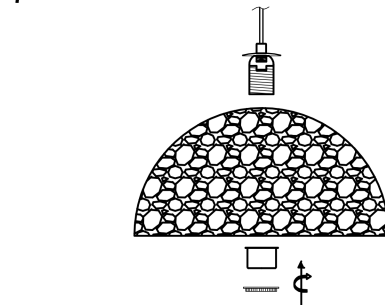
- 5、Fix the canopy to the wall by screws.



- 6、Take out the lamp cup and lampholder ring.



- 7、Put the lamp shade and lamp cup into the lampholder then screw the lampholder ring.



- 8、Screw the bulb into the lampholder.

