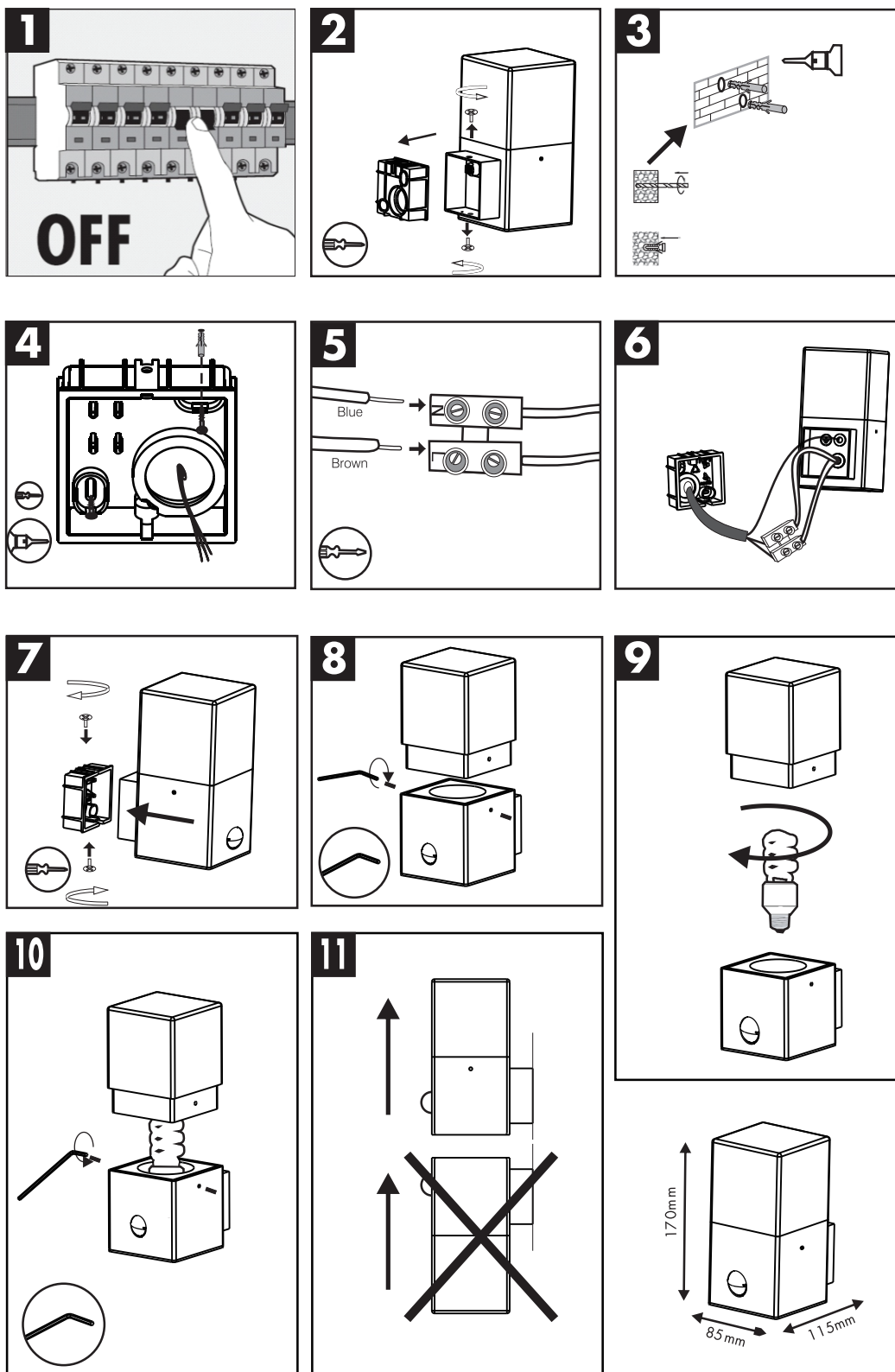


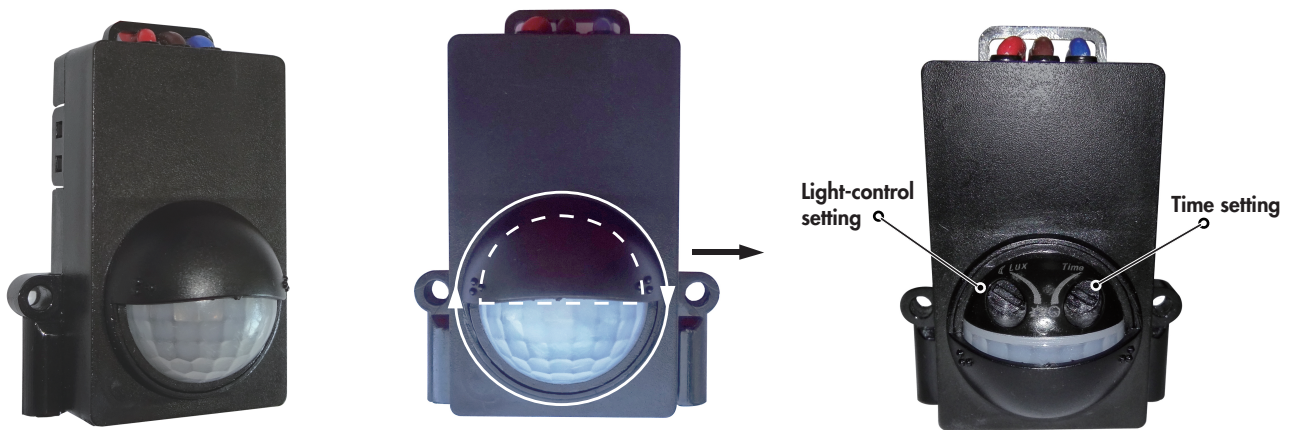
INSTRUCTION MANUAL



Denmark WL PIR Dark Grey
90783



Infrared Sensor Instruction



Characters

- Turn the sensor cover left or right you can find the adjusting knob.
- It can identify day and night automatically. And the working light can be chosen freely and make it work at night and not work in the day time.
- Illuminated time can be adjusted according to the customer's desire.
Mini shell (57mm*44.5mm*28mm)

Specifications

Power source: 220-240V/AC

Power frequency: 50/60Hz

Rated load: 50W Max.

Detection range: 9m Max.

Time setting: Min: <5sec

Max: 8min±1 min(adjustable)

Detection angle: 120°

Light-control: <10~2000LUX (adjustable)

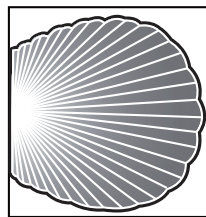
Working humidity: <93%RH

Working temperature: -25~+45℃

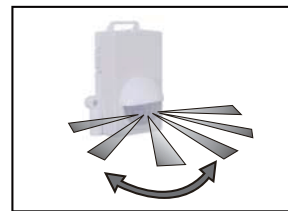
Power consumption: <0.5W

Installation height: 0.7~2m

Sensor information



9m Max
Correct moving orientation



120°
Detection Angle

Note: please don't adjust the two functional buttons to excess. That is because the two functional buttons were connected to the components directly, there is a small stopper in each of the two components, when you adjust the buttons from start to end, the excessive turn will damage the stopper, and lead to the 360° non-stop turn around. The adjust range limit is 270°, please do pay attention to this.

The factory intercalation: Light-control is 10 lux, Time setting is 5 seconds.

Notes

- Electrician or experienced human can install it.
- The unrest objects can't be regarded the installation basis-face.
- In front of the detection window there should be no hinder or unrest objects effecting detection.
- Avoid installing it near air temperature alteration zones for example: air condition, central heating, etc.
- Please don't open the case for your safety if you find the hitch after installation.