



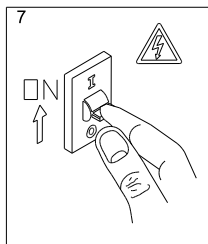
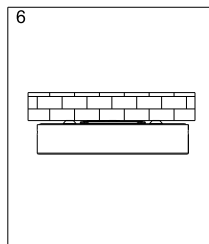
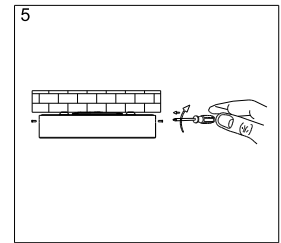
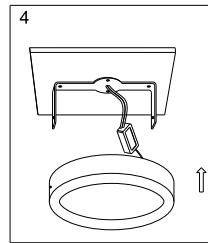
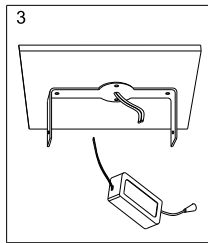
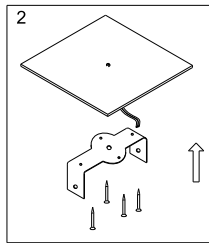
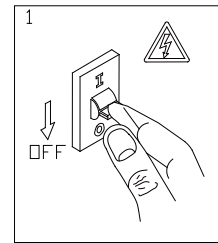
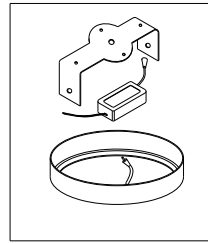
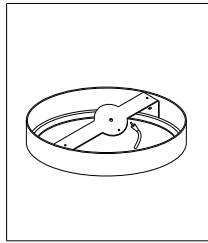
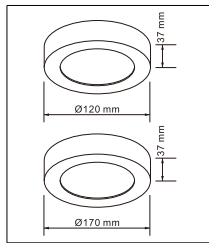
WWW.QAZQA.COM

Plate CL RN White 90544/90545

We are delighted that you have purchased this LED panel Light. This light is suitable for indoor use only. Please read this instruction on manual before installation and retain for future reference.

IMPORTANT: Never modify the unit, there are no user serviceable parts inside. Not suitable for use with dimmer switches. Install in accordance with IEC Wiring Regulations.

THE LIGHT SHOULD BE INSTALLED BY A QUALIFIED ELECTRICIAN.



TECHNICAL DETAILS:

Voltage:	90-264V	50/60Hz
Wattage:	6W/12W	
CCT:	3000K	Warm white
CRI:	>80	
IP:	IP 20	

QAZQA