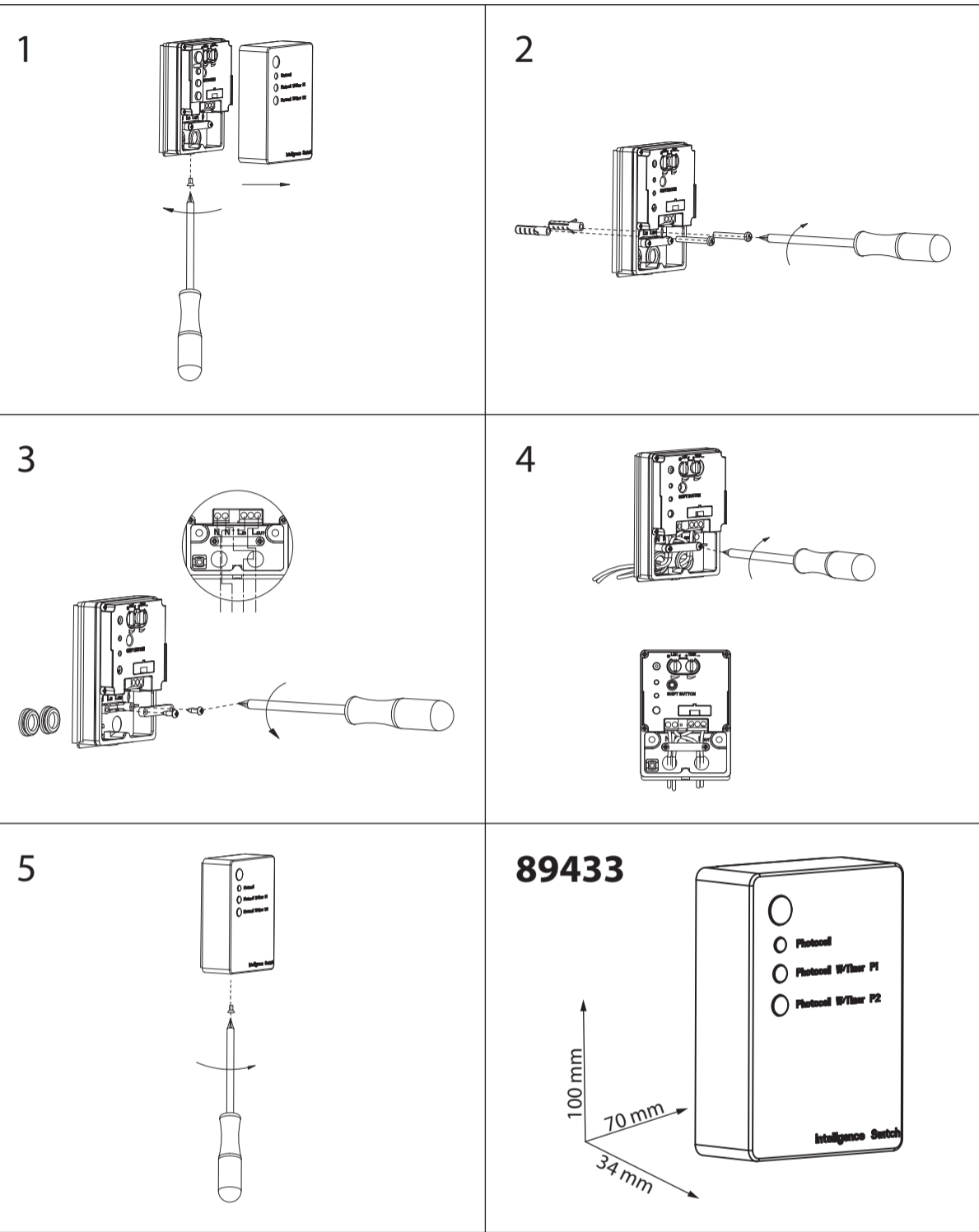




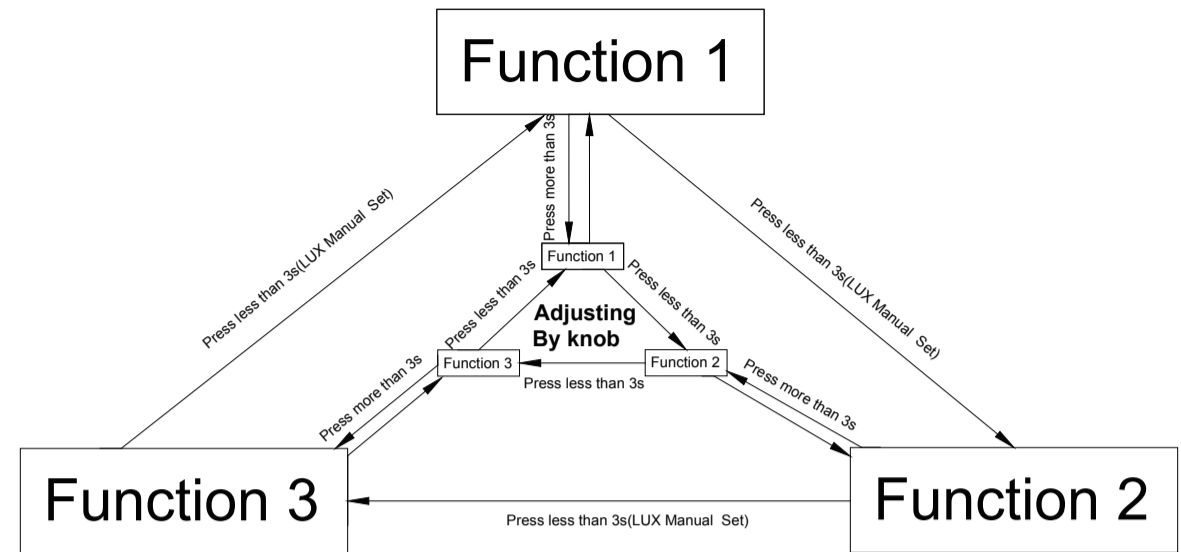
WWW.QAZQA.COM



Voltage: 220-240V~50Hz
 Output: Max.1500W incandescent or Max.600W fluorescent
 Mode1: run dusk to dawn
 Mode2: run 3 minutes to 8 hours adjustable in dusk
 Mode3: run 3 minutes to 8 hours adjustable in dusk,
 another 2 hours fixed before dawn
 Weatherproof: IP44



WWW.QAZQA.COM



THE SHIFT BUTTON: This unit has a button switch; user can press it with a pen.

- User can shift the functions by press the button one time (less than 3s); from FUNCTION1 to FUNCTION2, FUNCTION2 to FUNCTION3; FUNCTION3 to FUNCTION1. When power on, the unit is at FUNCTION1
- User can manual set the LUX by press the button one time (more than 3s) at the desired level, than the function LED will flash 2times. In this case, if user presses the button less than 3s, the unit will shift to next function, but the unit also in manual set LUX; if user press the button more than 3s, the function LED will flash 3times, than the unit return to set the LUX by knob.

Note: Please don't set LUX level at more than 100LUX (We suggest at 5-50LUX), otherwise the unit will dysfunction.

IMPORTANT: All the controls are under the Aluminum Cover, so before any adjustment please open the Aluminum Cover.

