

## INSTALLATION INSTRUCTIONS

Please read these instructions carefully before attempting to install this product. It is advisable to keep these instructions in a safe place for future reference. IF IN DOUBT, CONSULT A QUALIFIED ELECTRICIAN.

### PARAMETER:

Model	70083	70082
IP Rating	IP44	IP44
Rated Voltage	AC 220-240V, 50Hz	AC 220-240V, 50Hz
Rated Wattage	2xmax.35W	max.35W
Protection Class	Class I	Class I
Lampholder	GU10	GU10

### Electrical Installation

Always switch off the electricity supply at the mains during installation and maintenance. We recommend that the fuse is withdrawn or circuit breaker switched off at the distribution board whilst work is in progress (turning off the light switch is not sufficient).

1. Unscrew the screw and release the fitting from its wall bracket.
2. Use the wall bracket as a template to mark the position of the drill holes. Drill with a suitable drill bit and plug the mounting holes with suitable plastic wall plugs. Take care not to foul any mains cables or pipes below the surface while drilling.
3. Use a sharp object to pierce the rubber grommet in the wall bracket.
4. Feed the incoming mains cable through the rubber grommet in the wall bracket and attach the wall bracket to the wall with suitable wall screws.
5. Connection to the mains should be made using the general wiring code shown on diagram. Ensure that the connections are tight and no loose strands of wire are left out of the terminal block.
6. Fit the fitting to the wall bracket and secure it using the screw with locking washer.
7. Unscrew the cover screws from the fitting and remove the cover and shade.
8. Fit the recommended light bulb type: **Max. 35W GU10**.
9. Replace the cover and shade. Ensure the sealing rings are in place and are not twisted or distorted when replacing the shade.
10. Restore mains supply and switch on.

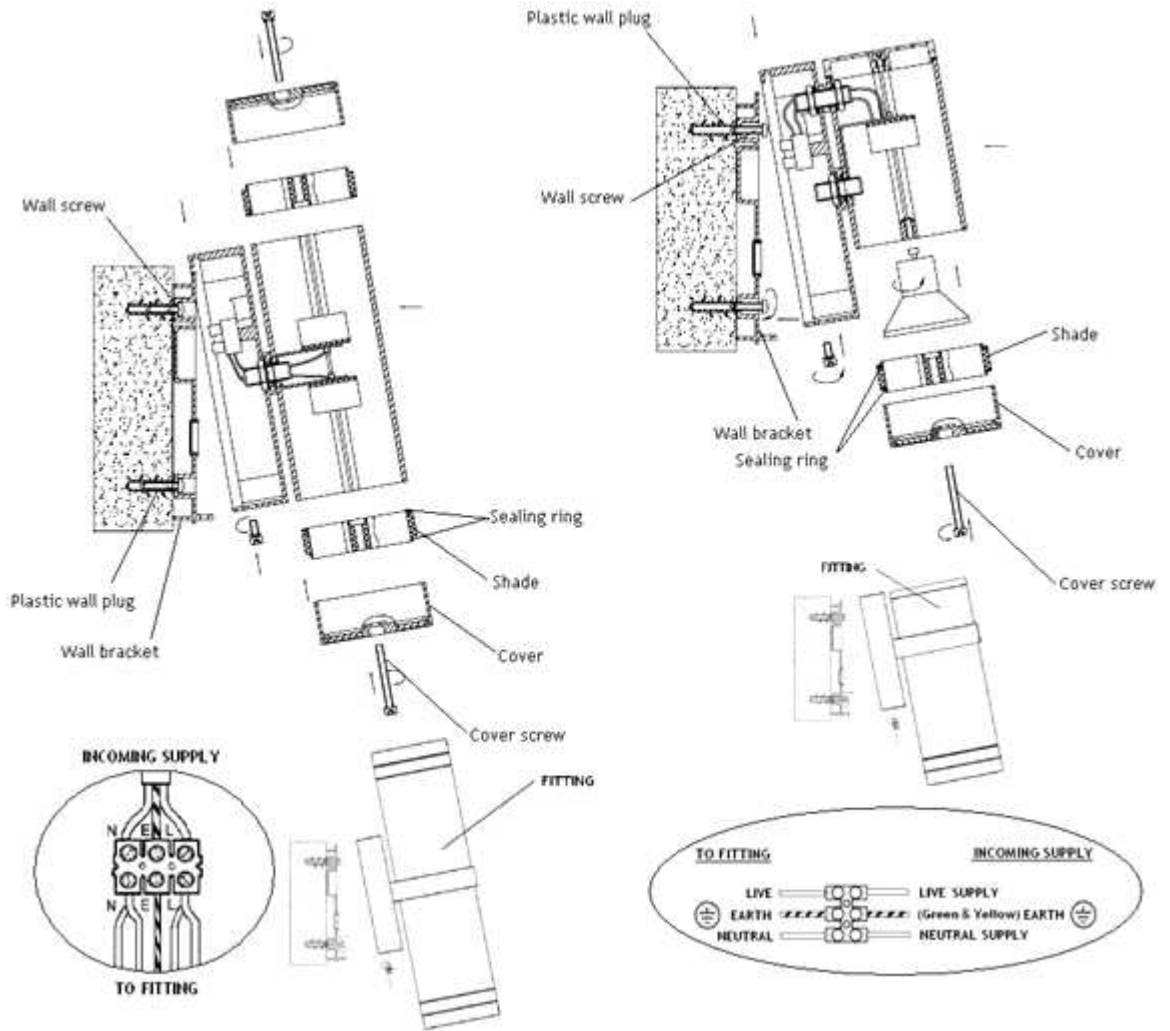
### Bulb Replacement

1. Switch off product and allow to cool.
2. Remove the cover and shade by loosening the cover screws.
3. Obtain new bulb.
4. Insert the bulb in lampholder.
5. Replace the cover and shade.
6. Restore mains supply and switch on.



WWW.QAZQA.COM

1. This product must be earthed.
2. We suggest that you use H05RN-F specification cable (not supplied) which is an outdoor grade, rubber sheathed cable. The cable must have a minimum cross sectional area of 1.0mm<sup>2</sup>.
3. Please use the double-pole-off switch.
4. Replace any cracked/damaged diffuser immediately-do not use if they are damaged.



70083

70082