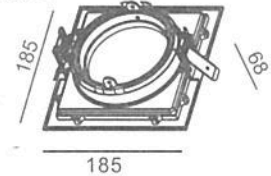




WWW.QAZQA.COM

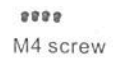
46394



CDM-T



connection part



M4 screw



glass

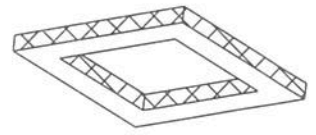


lampholder and bracket

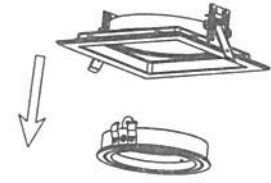


reflector

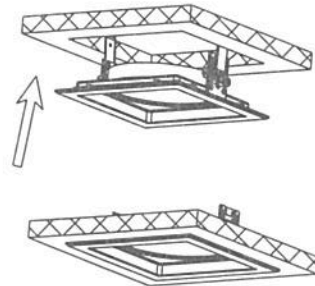
1. Cutout is 170x170mm



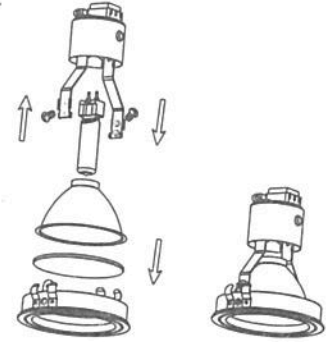
2. take out the middle ring.



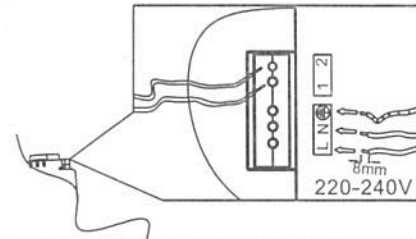
3. Install the product body into the ceiling.



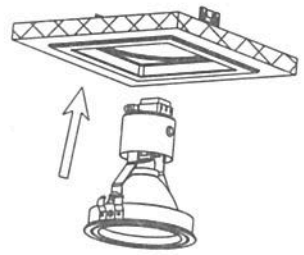
4. Put in the bulb, press middle ring with glass and reflector, then screw the middle ring into bracket.



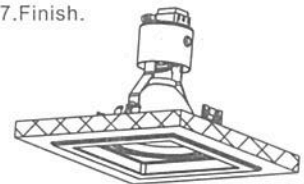
5. Connect the ballast with cable.



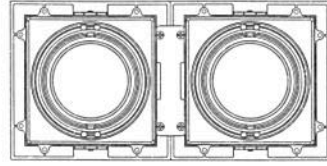
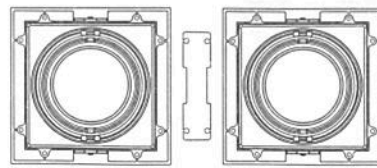
6. Put in the middle ring into product body.



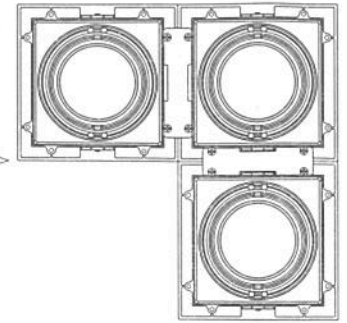
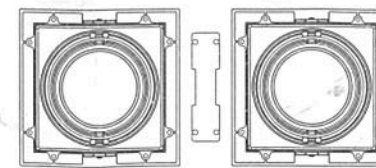
7. Finish.



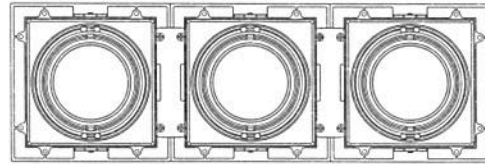
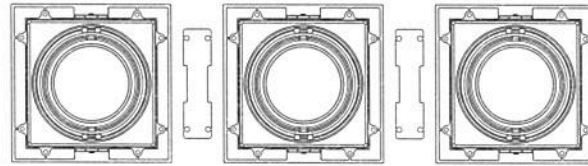
QAZQA



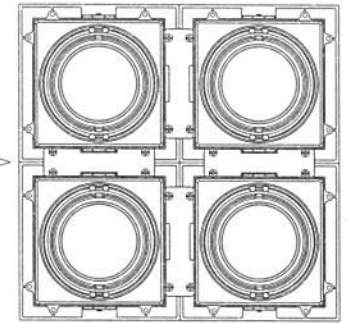
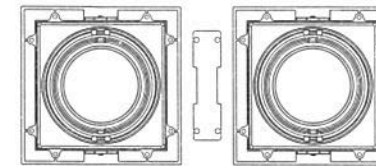
Two single units assemble with one connector to be double unit.



Three single units assemble with two connectors to be "L" shape triple unit.



Three single units assemble with two connectors to be triple unit.



Four single units assemble with four connectors to be quadruple unit.