



WWW.QAZQA.COM

How Does The Solar Light Work?

During the daytime, the solar panel converts sunlight into electricity and charges the battery. At night, the light turns on automatically using the electricity stored.

Before First Use

Place the solar light in direct sunlight and charge for 10-12 hours. The light will turn on in the evening automatically.

Select a location with full, direct sunlight. Shady locations will not allow the battery fully charge and can reduce the illumination time.

Note: The selected location should not be near a night light source such as a porch or street light, as these might keep the solar light turned off at all times.

Clean the solar panel regularly with a soft cloth or paper towel for the best result.

The illumination time depends on the geographical location, weather conditions and seasons etc.

Technical Data

Article Name: Solar LED Deck Light

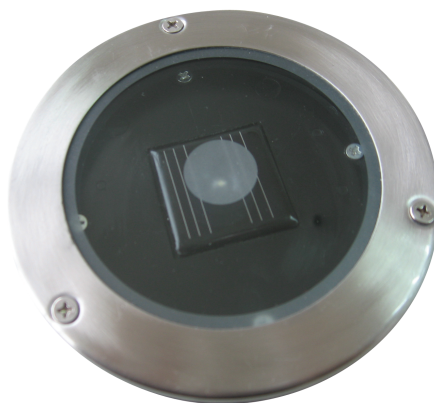
Product Size: Approx. $\Phi 12$

Material: Stainless Steel Plate + ABS

LED: 1 White LED

Solar Panel: (2V/40mA).

Battery: 1.2V / AAA 500mAh /NI-MH



45785

QAZQA