

INSTRUCTION MANUAL

(NL) Gebruikte symbolen

(GB) Safety Precautions / (FR) Symboles utilisés / (DE) Verwendete Symbole / (PL) Stosowane symbole / (NO) Brukte symboler / (DK) Brugte symboler / (SE) Använda symboler / (FI) Käytetyt symbolit / (IT) Simboli usati / (ES) Símbolos empleados / (CZ) Použité symboly / (PT) Símbolos utilizados / (GR) Χρησιμοποιούμενα σύμβολα



220-240V~
50Hz



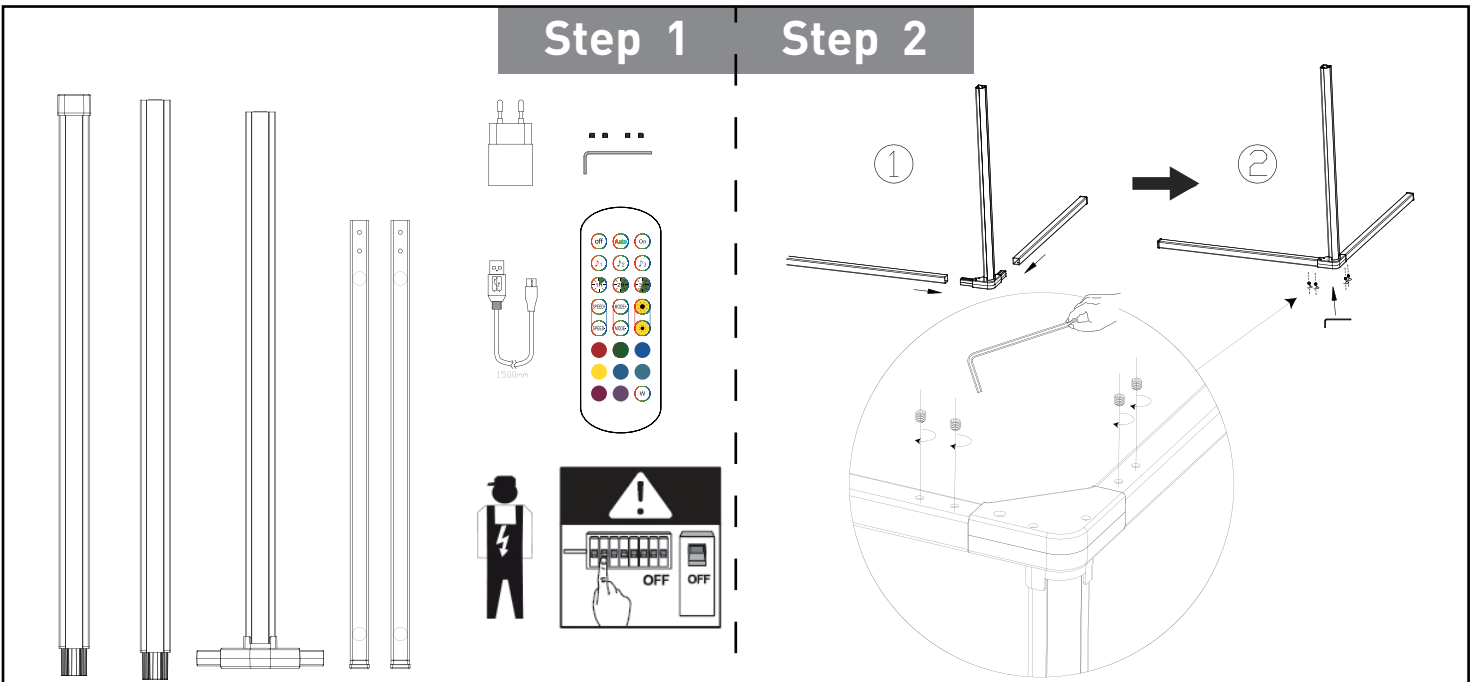
IP20



Carla FL Black RGB
107442

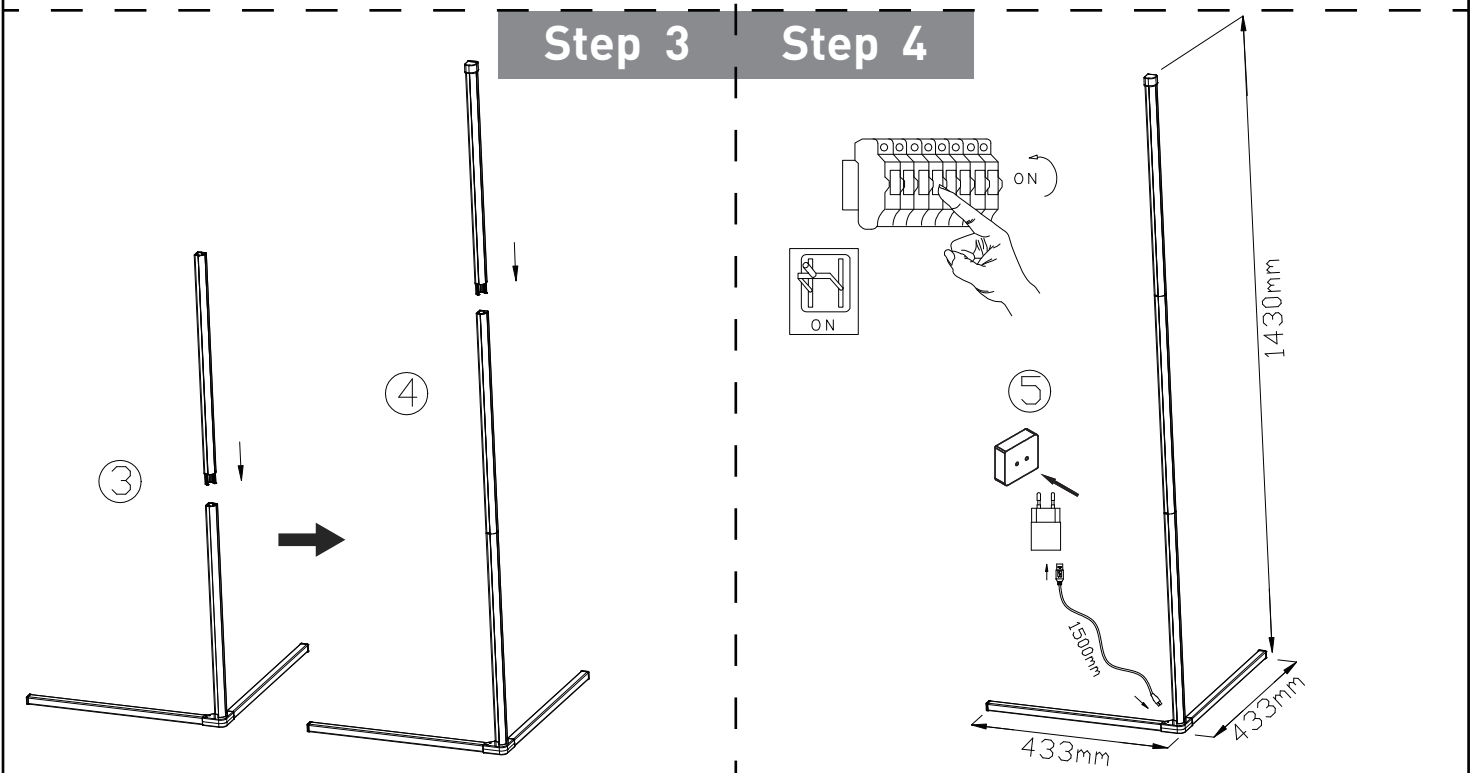
Step 1

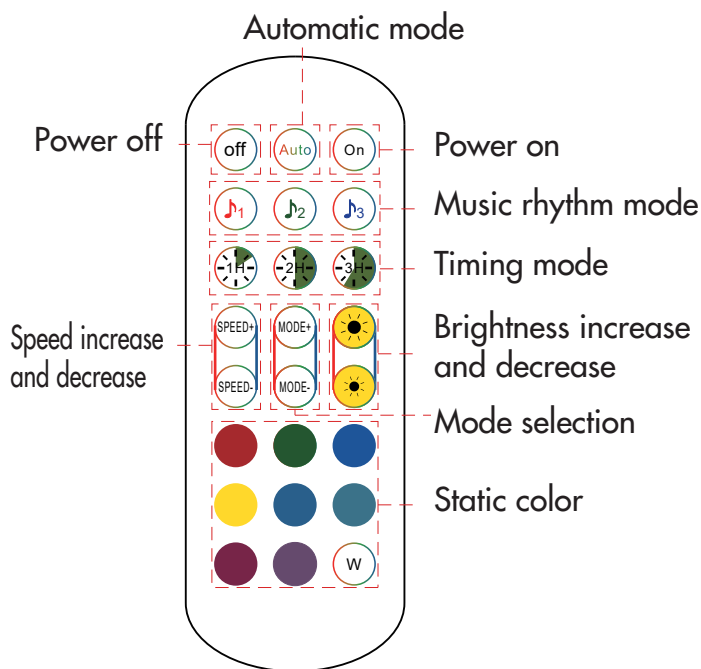
Step 2



Step 3

Step 4





Off - Switch OFF
 Auto - Show the color / mode automatically
 On - Switch ON
 Musical note 1 - Music sensor mode 1
 Musical note 2 - Music sensor mode 2
 Musical note 3 - Music sensor mode 3
 1H - Timer function (switch off after 1 hour)
 2H - Timer function (switch off after 2 hours)
 3H - Timer function (switch off after 3 hours)

- SPEED+ Increase the speed on dynamic mode / Increase the sensitivity on music sensor mode
- SPEED- Decrease the speed on dynamic mode / Decrease the sensitivity on music sensor mode
- MODE+ Adjust to next lighting effect on dynamic mode
- MODE- Adjust to previous lighting effect on dynamic mode
- Red Select red light colour
- Green Select green light colour
- Blue Select blue light colour
- Yellow Select yellow light colour
- Light green Select light green light colour
- Light blue Select light blue light colour
- Pink Select pink light colour
- Purple Select purple light colour
- W Select white colour (R+G + B, not pure white)

REMARK

1. Please use original adapter: AED10C-0502000VLUUO
2. For optimum performance of the music mode, please put the speaker (incl. mobile phone speaker) as close as possible to the light, so the light with built-in music sensor can detect the music and can activate the music mode perfectly. In case music mode does not work perfectly increase the volume or put the speaker closer to the light (mobile phone that plays music on speaker needs to be within range of 10 cm of the sensor).

SAFETY INSTRUCTION

Please study the instruction manual and below information carefully before installing or using this product. Please keep this user manual for further reference

1. The luminaires may only be installed by authorized and qualified technicians according the valid regulations for electrical installation.
2. Maintenance of the luminaires is limited to their surfaces. During maintenance no moisture can come into contact with any areas of the terminal connections or voltage control parts.
3. The electrical supply must be switched off at the outset, preferably by means of a switch in the distribution box, before any installation, maintenance or repair work is undertaken.
4. Exterior lighting must not be installed during rain.
5. Take account of the minimal separation distance from other objects and the room required around the fitting.
6. If in any doubt, consult a professional, taking local installation requirements into account. Some countries stipulate that lighting may be installed only by registered installers.
7. Clamping screws in electrical connections must be adequately tightened. This is particularly the case with 12V low voltage conductors.
8. Clean with a clean, dry cloth or brush, use no solvents or abrasives. Avoid dampness on all electrical components
9. Take account of all available technical information.
10. Meaning of symbols:



This icon indicates the level of water-proof and dust-proof



Protection Class I: the fitting must be earthed



Protection Class II: the fitting is doubled insulated and does not require earthing



Protection Class III: the fitting is low voltage



Minimum distance from lighted objects (meters)



The type of lamp and maximum size and wattage indicated in each lighting unit must not be exceed; different items require different kind of light sources with different bulb icons



The armature is designed to work only with the indicated voltage. Different items require different working voltage.



The luminaire can be used in combination with a dimmer



The luminaire can be dimmed by wall switch

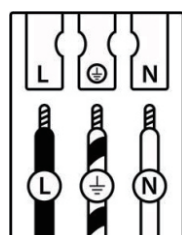


The reference light angle and light space of the luminaire



This luminaire cannot be disposed together with normal domestic waste in standard rubbish can, but you have to bring it to a staging area for electrical waste

11. Take note of the symbols when connecting wires:



	(DE)	(GB)	(FR)	(NL)	(PL)	(NO)	(DK)
L	Stromführender Leiter	Live conductor	Conducteur	Spanningvoerende draad	Przewód prądowy	Strømførende leder	Strømførende leder
	Schutzleiter	Earth conductor	Conducteur de protection (terre)	Aardkabel	Przewód uziemiający	Jordledningen	Jordledningen
N	Neutralleiter	Neutral conductor	Conducteur neutre	Nulleider	Przewód zerowy	Nøytralleider	Neutralleider
	(SE)	(FI)	(IT)	(ES)	(CZ)	(PT)	(GR)
L	Strömförande ledare	Virtajohdin	Conduttore sotto tensione	Conductor de corriente	Vodič pod napětím	Condutor vivo	Ρευματοφόρος αγωγός
	Skyddsledare	Suojajohdin	Conduttore di terra	Conductor de protección	Ochranný vodič	Condutor de terra	Αγωγός γείωσης
N	Neutralledare	Nollajohdin	Conduttore neutro	Conductor neutro	Neutrální vodič	Condutor neutro	Ουδέτερος αγωγός