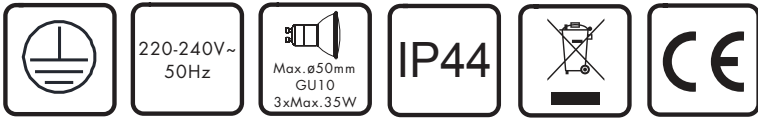
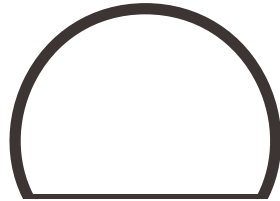


INSTRUCTION MANUAL



Ducha CL/Ducha CL 2/Ducha CL 3
98689/98690/98691/98692/98693/98694

<p>1.</p>	<p>2.</p>
<p>3. INPUT: AC220-240V~</p>	<p>4.</p> <p>Warning: When replacing a halogen lamp, wait for it to cool, for a minimum of 5 minutes</p>
<p>5.</p>	<p>Overall Sizes:</p>



Wi-Fi & Bluetooth Smart Bulb GU10 Manual

02505



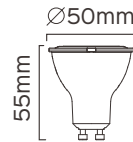
FEATURES

- Wi-Fi & Bluetooth connection
- Voice control
- Timer switch
- Grouping
- Full range of W / W+WW / RGBW / RGBWW available
- No Hub required
- Remote control
- Sync with music

PARAMETERS

COLOR	INPUT VOLTAGE	Current(mA)	Base	Power(W)
CW	AC220-240V 50Hz	80	E27	9
CCT		80		9
RGBW		80		9
RGB+CCT		80		9

WIRING DIAGRAM

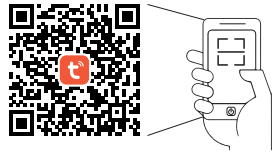


DOWNLOAD APP

1: Search "Tuya Smart" from App store or Google play.



2: Scan the QR code from the label or user

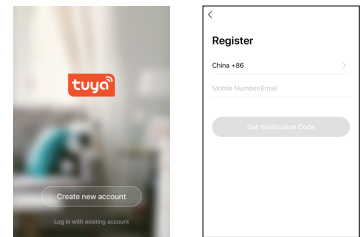


The APP is compatible with Android 4.0 and IOS8.1 and higher version.



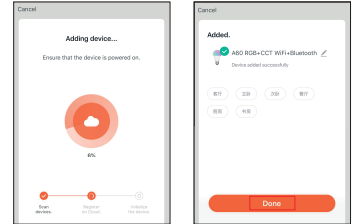
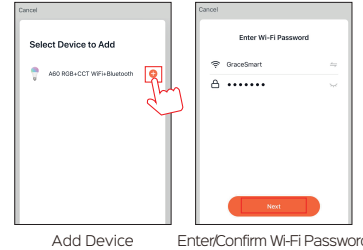
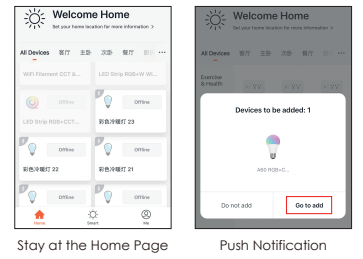
LOG IN / REGISTER ACCOUNT NUMBER

Open the Tuya Smart APP, sign up for a new account or log in with an existing account.



DEVICE PAIRING-EASY IN

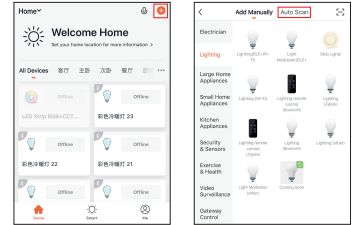
- Turn on the Smart Bulb and enter the home of APP while ensure Bluetooth on and the WIFI signal is good and stable.
- Smart Bulb will flashing when turn on the power supply. Stay at the home page and found the push notification, then click Go to add.
- Select the Wi-Fi connected to the smart device, input the Wi-Fi password, and then click "Next" to wait for the matching to succeed. (Make sure smart devices share the same Wi-Fi)



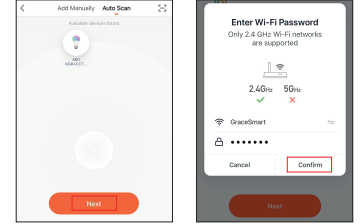
Connecting Pairing Successful

DEVICE PAIRING-AUTO SCAN

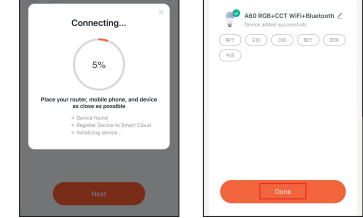
- Turn on the Smart Bulb and enter the home of APP while ensure Bluetooth on and the WIFI signal is good and stable.
- Smart Bulb will flashing when turn on the power supply. Stay at the home page and enter the APP adding device interface, click Auto Scan to find the device then click next.
- Select the Wi-Fi connected to the smart device, input the Wi-Fi password, and then click "Confirm" to wait for the matching to succeed. (Make sure smart devices share the same Wi-Fi)



Stay at the Home Page Push Notification



Scan Devices Enter/Confirm Wi-Fi Password

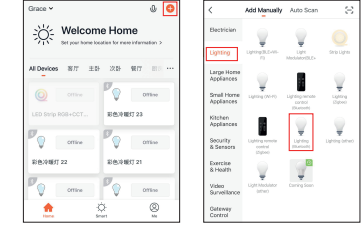


Connecting Pairing Successful

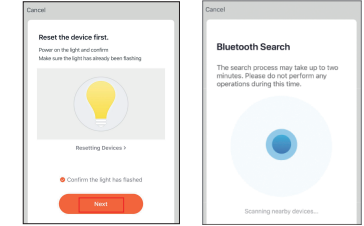
DEVICE PAIRING-BLUETOOTH MANUALLY

- Turn on the Smart Bulb and enter the home of APP while ensure Bluetooth on and the WIFI signal is good and stable.
- Smart Bulb will flashing when turn on the power supply. Stay at the home page and enter the APP adding lighting device interface, click "Lighting(Bluetooth)".
- If the Smart Bulb is not flashing when turn on the power supply, long press the Reset button for more than 6 seconds. While Smart Bulb flashing, select "confirm the light has flashed",

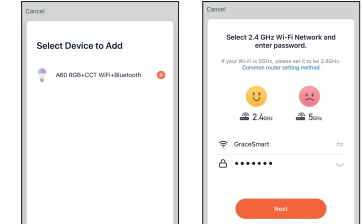
4. then click "Next". Select the Wi-Fi connected to the smart device, input the Wi-Fi password, and then click "Next" to wait for the matching to succeed.



Stay at the Home Page Manually Bluetooth



Searching Searching



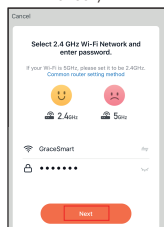
Add Device Enter/Confirm Wi-Fi Password

DEVICE PAIRING-AP PAIRING

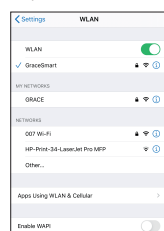
- Turn on the Smart Bulb and enter the home of APP while ensure Bluetooth on and the WIFI signal is good and stable.
- Smart Bulb will flashing when turn on the power supply. Stay at the home page and enter the APP adding lighting device interface, click "Lighting(BLE+Wi-Fi)".
- If the Smart Bulb is not flashing when turn on the power supply, long press the Reset button for more than 6 seconds. While Smart Bulb flashing, select "confirm the light has flashed",
- then click "Next". Select the Hotspot connected to the smart device, input the Wi-Fi password, and then click "Next" to wait for the matching to succeed. (Make sure smart devices share the same Wi-Fi)



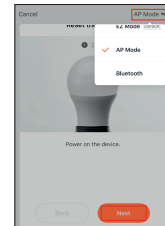
Manually Wi-Fi



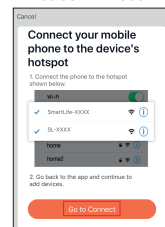
Enter/Confirm Wi-Fi Password



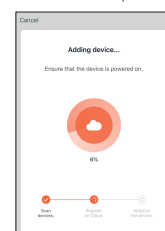
Select Hotspot



Select AP Mode



Confirm Hotspot

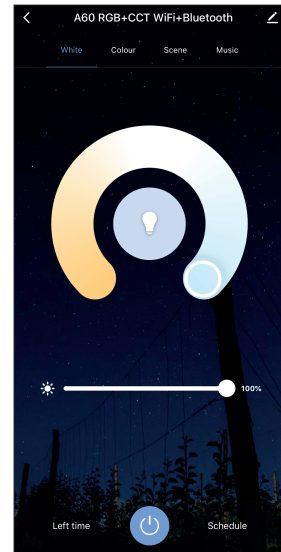


Connecting

CONTROL DEVICE

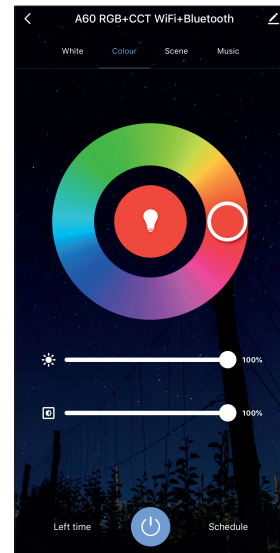
After the device is connected successfully, tap "Device" at the bottom. The device name of the smart lamp shows in the list. Tap it to enter the control panel of the smart lamp.

1. White mode: Adjust brightness and color temperature of white light.



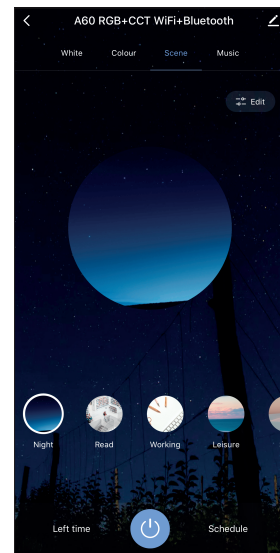
9.

2. Color mode: Adjust color, brightness, saturation



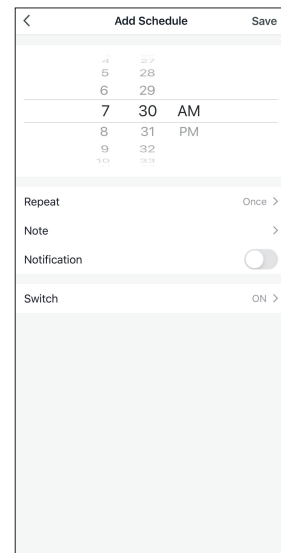
10.

3. Scene mode: Eight scenes modes (4 static & 4 dynamic).



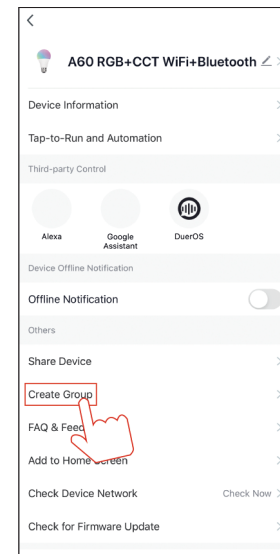
11.

4. Schedule: This will keep the bulb in ON/OFF position for a specific duration of time.



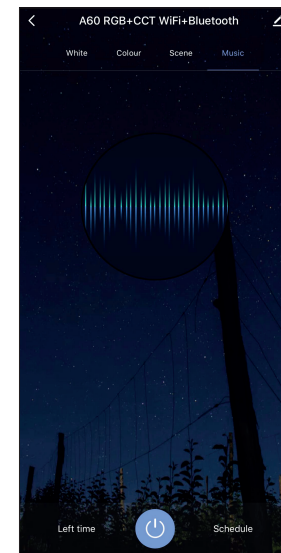
12.

5. Grouping: If you got two or more light, please tap "..." at the upper right corner of the control panel and create group. The smart lamp group will realize synchronous switch, color changes, the scene mode selection, timer, etc.



13.

6. Music mode: You can minimize the Tramsmart App to play music from any source. Your Smart Bulb will automatically synchronize and change color to the music.



14.

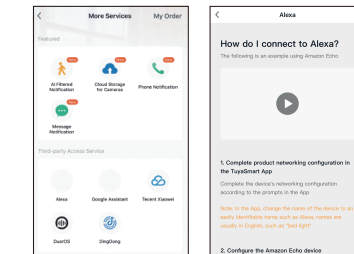
APP FUNCTION INTRODUCTION

Click the interface to control it according to the specific mode of the specific Smart Bulb. The following is public function introduction.

- Remote control: The Smart Bulb can be controlled anywhere after the smart device is successfully
- Timer function: Set the timer to turn on and turn off the Smart Bulb.
- Intelligent scene: The system sets a variety of intelligent scenes, and different scenes correspond to different
- Group: Group control is available(only for the same type of product). Family room management.
- Device Sharing: The device is shared with other user control devices in the home.

THIRD PARTY CONTROL

In the Tuya Smart APP: Find more service in "Me" menu, click to enter "voice service" (Alexa/ Google Assistant) and other services, click on the service you need. Connect to the third-party service device according to the operation guide.



For any product and APP updating, please contact with customer service.

15.

16.