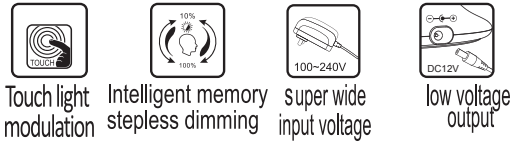


INSTRUCTION MANUAL

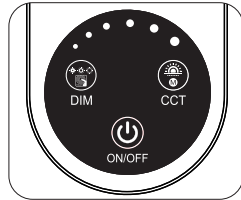


Touch light modulation Intelligent memory stepless dimming Super wide input voltage low voltage output

Joni TL 1 Black
Joni TL 1 White
103915/103916



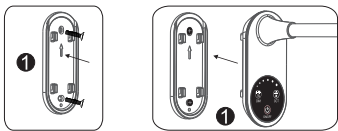
- ON/OFF Mode
- Press to turn on/off the lamp. It remains the last brightness & CCT when turn on the lamp again.



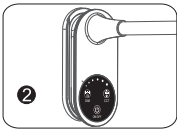
- CCT Mode
- The lamp will be in nature light and all bright under initial state. The color temperature is 4000K(±300K).
 - Second time to press, it comes with warm light and all bright. The color temperature is 3000K(±300K).
 - Third time to press, it comes with cool light and all bright. The color temperature is 6000K(±300K).

- Double Dimming Mode
- Slightly press to adjust brightness in three steps.
 - Long press to stepless adjust brightness(10%-100%) .

Wall lamp Installation Guide:



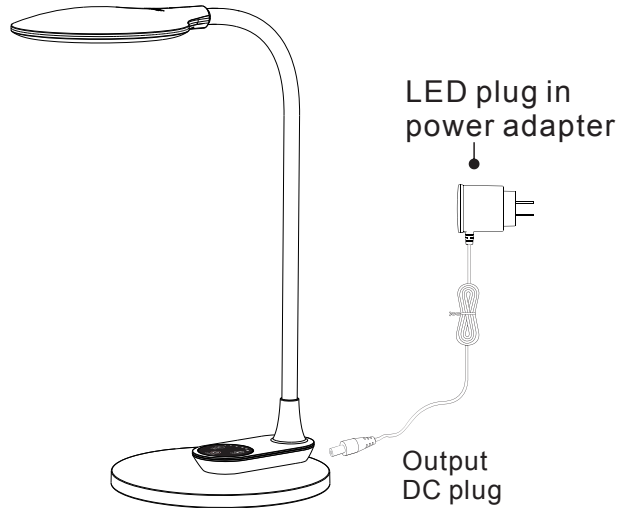
- Take out the hanging plate, remove the protective film from adhesive tage, paste the hanging plate to the wall in ideal position.
 - Take out the hanging plate, fix the plate to wall in ideal position with attached screws.
- Notice: Hang plate shall be pasted to rigid and smooth wall, uneven wall is not allowed.



- Insert the lamp into the panel according to the direction of the clasp and pull it down to check whether it is fixed or not.

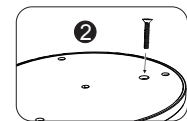
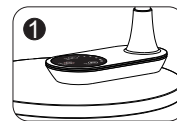
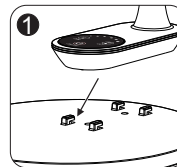
103915/103916

500	LM
8	W
3000/4300/6000	K
>80	Ra
25000	H



LED Wall Lamp

Table lamp Installation Guide:




- Insert the lamp body into the base hole, pay attention to the direction of the positioning card.

- Take the screws from the base and tighten them with a screwdriver.

SAFETY INSTRUCTION

Please study the instruction manual and below information carefully before installing or using this product. Please keep this user manual for further reference

1. The luminaires may only be installed by authorized and qualified technicians according the valid regulations for electrical installation.
2. Maintenance of the luminaires is limited to their surfaces. During maintenance no moisture can come into contact with any areas of the terminal connections or voltage control parts.
3. The electrical supply must be switched off at the outset, preferably by means of a switch in the distribution box, before any installation, maintenance or repair work is undertaken.
4. Exterior lighting must not be installed during rain.
6. Take account of the minimal separation distance from other objects and the room required around the fitting.
7. If in any doubt, consult a professional, taking local installation requirements into account. Some countries stipulate that lighting may be installed only by registered installers.
8. Clamping screws in electrical connections must be adequately tightened. This is particularly the case with 12V low voltage conductors.
9. When replacing a halogen lamp, wait for it to cool, for a minimum of 5 minutes.
10. Clean with a clean, dry cloth or brush, use no solvents or abrasives. Avoid dampness on all electrical components
11. **Take account of all available technical information.**
12. Take note of the symbols when connecting wires:
N = Neutral **L = Live**  = **Earth**
13. Meaning of symbols:



For indoor use only, where direct contact with water is impossible



Protection Class I: the fitting must be earthed



Protection Class II: the fitting is doubled insulated and does not require earthing



Protection Class III: the fitting is low voltage



Minimum distance from lighted objects (meters)



Only the self-shielded halogen lamp should be used with the luminaire



Strip the wire to the indicated length (mm); different items require different length



Connect using the specified cable; different items require different cables



The type of lamp and maximum size and wattage indicated in each lighting unit must not be exceed; different items require different kind of light sources with different bulb icons



The armature is designed to work only with the indicated voltage. Different items require different working voltage.



The luminaire can be used in combination with a dimmer



The reference light angle and light space of the luminaire



This luminaire cannot be disposed together with normal domestic waste in standard rubbish can, but you have to bring it to a staging area for electrical waste

