

INSTRUCTION MANUAL



Manuel TL 1 Black RGBW

103911



Colorful atmosphere lamp



LED night light



Touch light modulation



Intelligent memory stepless dimming



Super wide input voltage



Low voltage output



ON/OFF

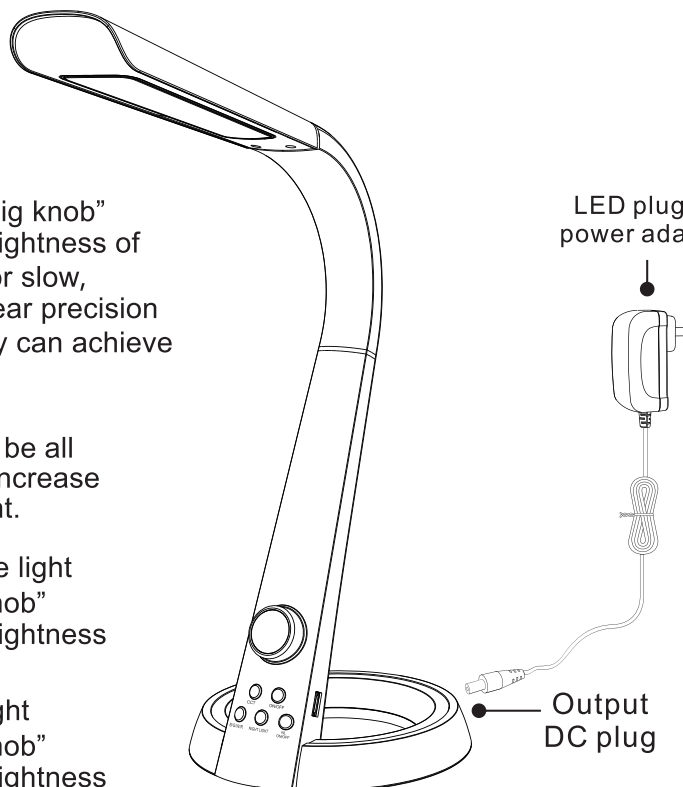
- Press to turn on the main lamp, press again to turn off the main lamp, turn on the lamp again with continuous electricity can restore the brightness of last time.



- In any color temperature, rotating "big knob" stepless increase or decrease the brightness of the light, dimming mode can be fast or slow, rotating slowly can be realized by gear precision fine-tuning brightness, rotating rapidly can achieve stepless dimming.

CCT

- The first time to touch it, the lamp will be all bright, can rotate "big knob" stepless increase or decrease the brightness of the light.
- The second time to touch it, the white light becomes brighter, can rotate "big knob" stepless increase or decrease the brightness of the light.
- The third time to touch it, the warm light becomes brighter, can rotate "big knob" stepless increase or decrease the brightness of the light.



Colorful atmosphere lamp

NL ON/OFF

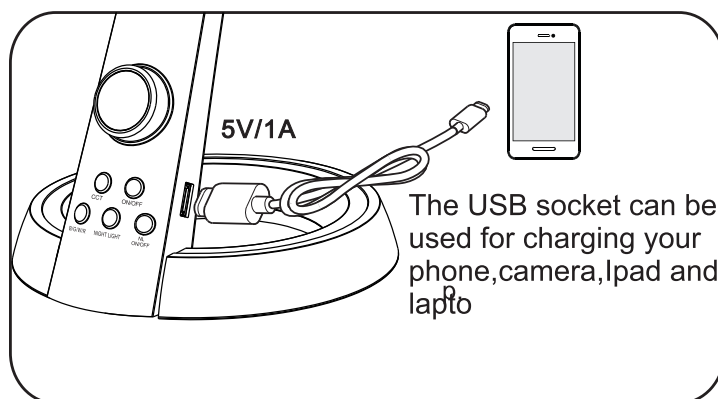
- On/off the first touch to turn on the colorful atmosphere lamp and touch again to turn off the colorful atmosphere lamp. when the lamp not go out, turn on the light and reset the initial state.

NIGHT LIGHT

- Three Steps dimming for the LED night light.

B/G/W/R

- Keep touching it to change B/G/W/R. (Blue mood/Green mood/White mood/Red mood/).



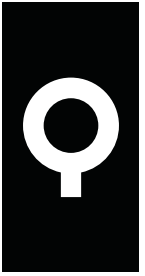
The USB socket can be used for charging your phone, camera, laptop and laptop.

103911

450	LM
8	W
3000/4300/6000	K
>80	Ra
25000	H

SAFETY INSTRUCTION

Please study the instruction manual and below information carefully before installing or using this product. Please keep this user manual for further reference



1. The luminaires may only be installed by authorized and qualified technicians according the valid regulations for electrical installation.
2. Maintenance of the luminaires is limited to their surfaces. During maintenance no moisture can come into contact with any areas of the terminal connections or voltage control parts.
3. The electrical supply must be switched off at the outset, preferably by means of a switch in the distribution box, before any installation, maintenance or repair work is undertaken.
4. Exterior lighting must not be installed during rain.
6. Take account of the minimal separation distance from other objects and the room required around the fitting.
7. If in any doubt, consult a professional, taking local installation requirements into account. Some countries stipulate that lighting may be installed only by registered installers.
8. Clamping screws in electrical connections must be adequately tightened. This is particularly the case with 12V low voltage conductors.
9. When replacing a halogen lamp, wait for it to cool, for a minimum of 5 minutes.
10. Clean with a clean, dry cloth or brush, use no solvents or abrasives. Avoid dampness on all electrical components
11. Take account of all available technical information.
12. Take note of the symbols when connecting wires:
N =Neutral L =Live ⊕ =Earth
13. Meaning of symbols:



For indoor use only, where direct contact with water is impossible



Protection Class I: the fitting must be earthed



Protection Class II: the fitting is doubled insulated and does not require earthing



Protection Class III: the fitting is low voltage



Minimum distance from lighted objects (meters)



Only the self-shielded halogen lamp should be used with the luminaire



Strip the wire to the indicated length (mm); different items require different length



Connect using the specified cable; different items require different cables



The type of lamp and maximum size and wattage indicated in each lighting unit must not be exceed; different items require different kind of light sources with different bulb icons



The armature is designed to work only with the indicated voltage. Different items require different working voltage.



The luminaire can be used in combination with a dimmer



The reference light angle and light space of the luminaire



This luminaire cannot be disposed together with normal domestic waste in standard rubbish can, but you have to bring it to a staging area for electrical waste